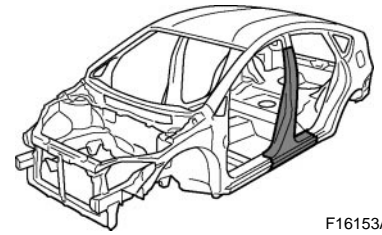


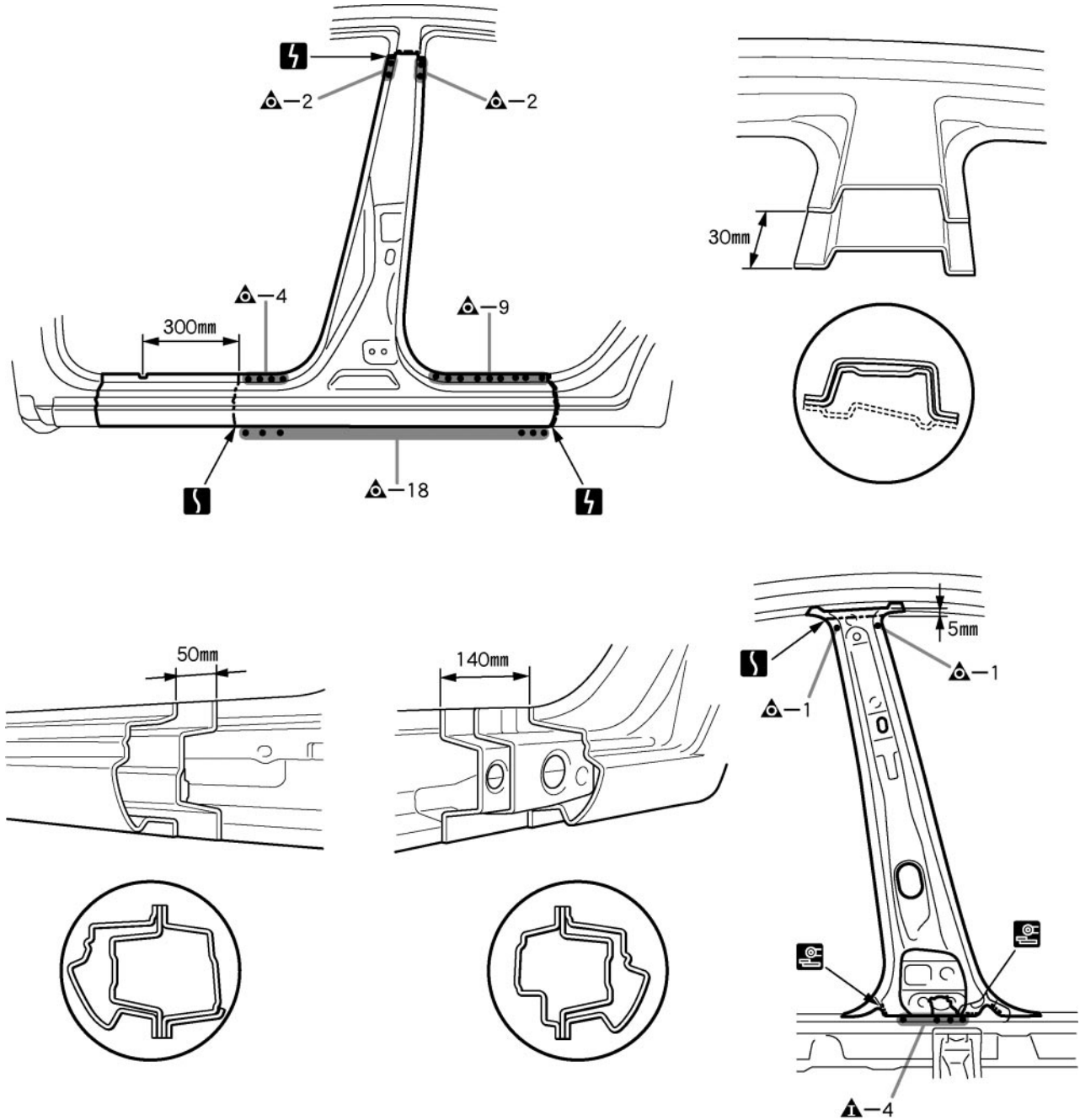
CENTER BODY PILLAR (CUT)

REPLACEMENT



F16153A

REMOVAL

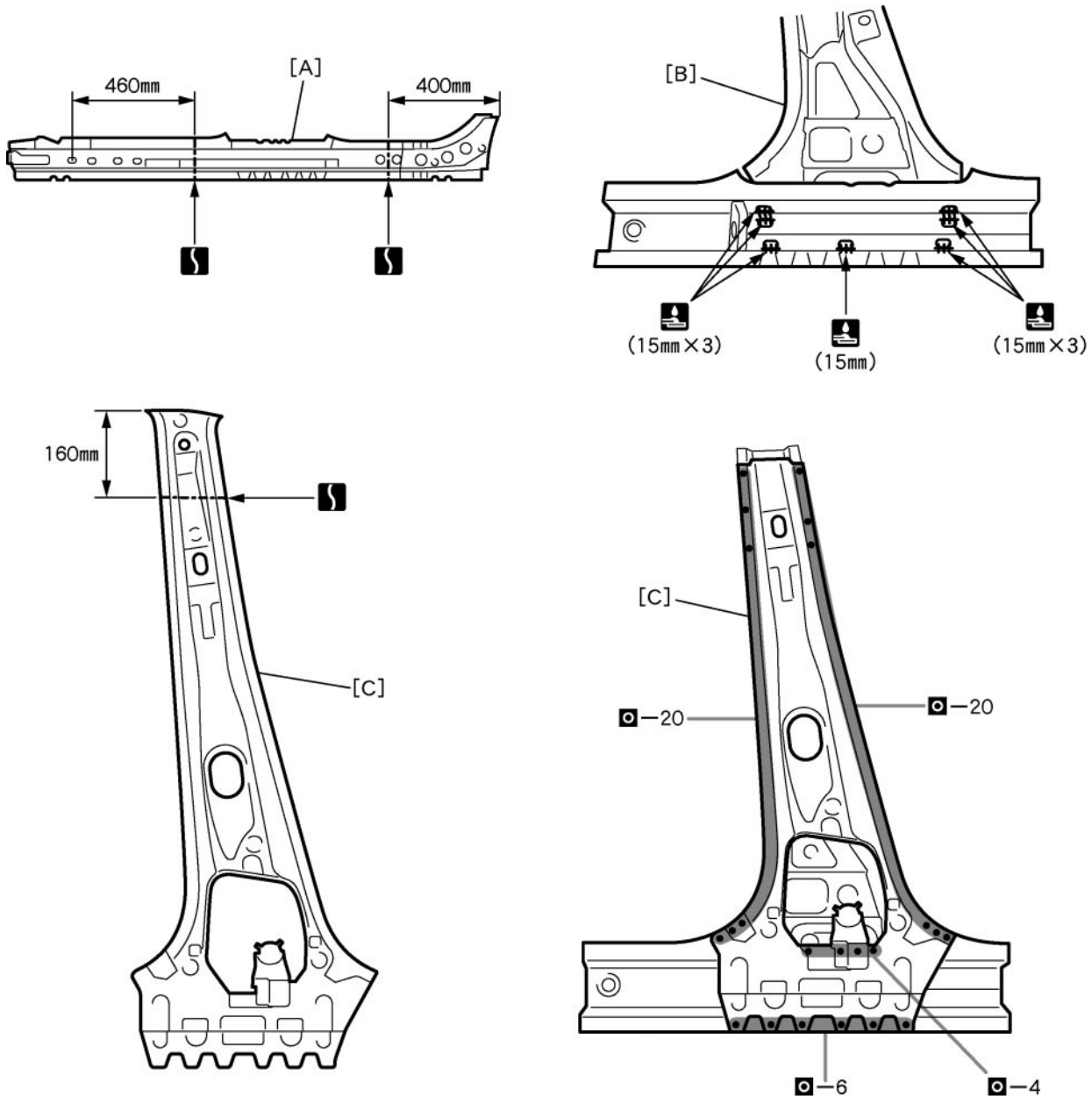


F16153

5mm (0.20in.) 30mm (1.18in.) 50mm (1.97in.) 140mm (5.51in.) 300mm (11.81in.)

INSTALLATION

- Temporarily install the new parts and measure each part of the new parts in accordance with the body dimension diagram. (See the body dimension diagram)
- Inspect the fitting of the related parts around the new parts before welding. This affects the appearance of the finish.
- After welding, apply the polyurethane foam to the corresponding parts.
- After welding, apply body sealer and under-coating to the corresponding parts.
- After applying the top coat layer, apply anti-rust agent to the inside of the necked section structural weld spots.



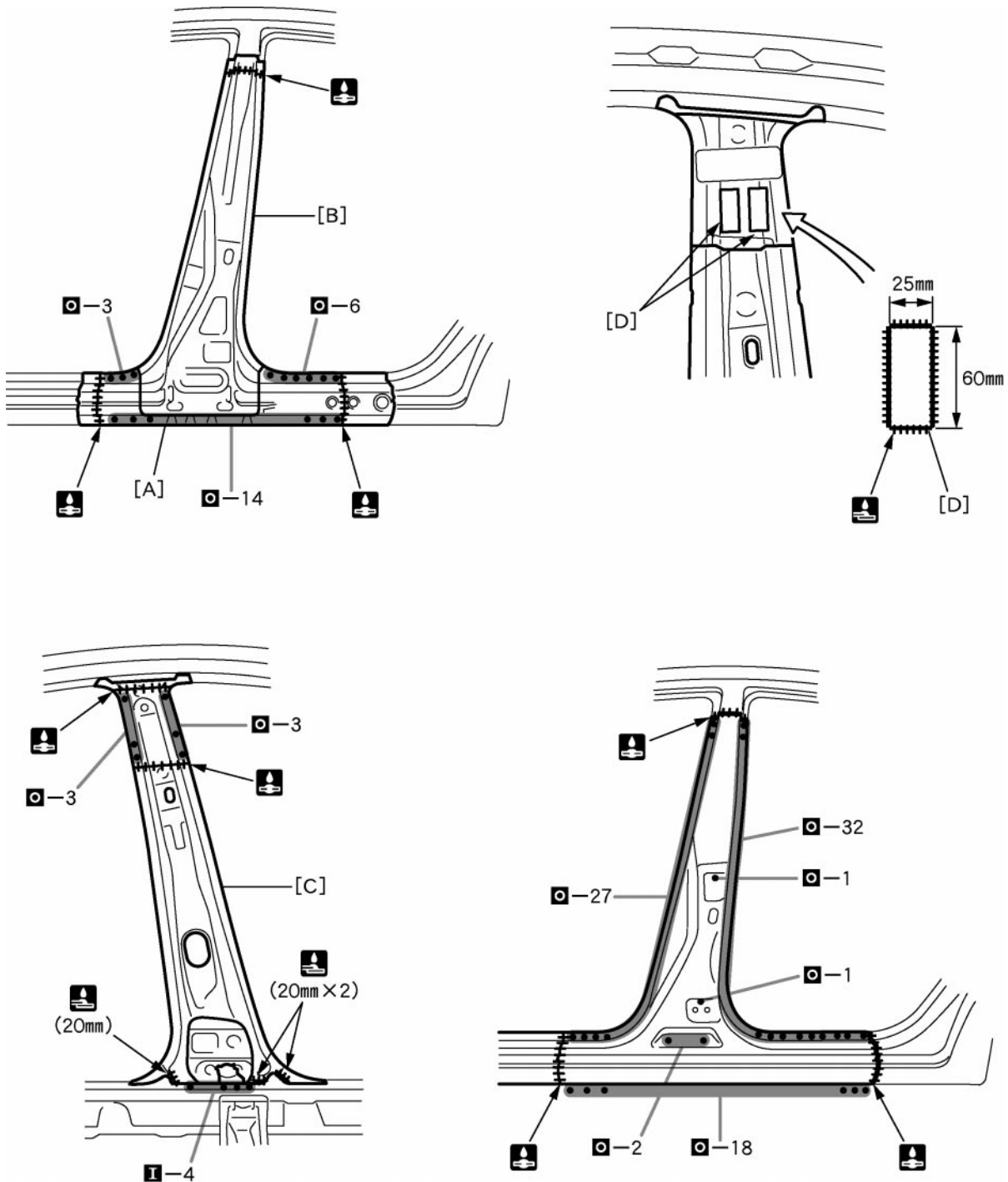
F16154

POINT

- 1 Before temporarily installing the new parts, weld the [A], [B], and [C] with standard points.

PART NAME

[A] Rocker Outer Reinforcement	[B] Center Body Pillar Reinforcement	[C] Center Body Inner Pillar
15mm (0.59in.)	160mm (6.30in.)	400mm (15.75in.)
		460mm (18.11in.)



F16155

POINT

- 1 Inspect the fitting of the front door and rear door, etc., before welding, since this affects the appearance of the finish.
- 2 Weld the [D] from inside of the butted portion.

Hint:

- 1) Make the [D] from the remainder of new parts.
- 3 After welding the reinforcement to the vehicle, install the outer pillar.

PART NAME

[A] Rocker Outer Reinforcement [B] Center Body Pillar Reinforcement [C] Center Body Inner Pillar
 [D] Stiffener

20mm (0.79in.)

25mm (0.98in.)

60mm (2.36in.)